

## Traccess 170 - 17m Mobile Elevating Work Platform



|                                  |  |
|----------------------------------|--|
| Max Work Height                  | 17m (15m to basket floor)                |
| Max Work Radius                  | 7.5m                                     |
| Max SWL                          | 200kg (over full range)                  |
| 2person Platform                 | 1300x700x1100mm                          |
| Travel Dimensions                | 4500mm long<br>780mm wide<br>2000mm high |
| Total Weight                     | 2050kg                                   |
| Turret Rotation                  | 330°                                     |
| Leg Max Ground Reaction Force    | 1700daN                                  |
| Max Allowed Windspeed            | 12.5m/sec                                |
| Max Allowed Manual Lateral Force | 40daN                                    |
| Gradeability                     | ~31%                                     |
| Max Allowed Ground Incline       | 3°                                       |

- Articulated boom (two elements) + telescopic boom (main boom + extension) + jib
- 330° turret rotation on bearing turntable
- Individual hydraulic controls in basket
- Engine start and stop controls from basket
- Basket base in composite material with aluminium guardrails
- Automatic hydraulically actioned basket levelling
- Basket load sensing device
- 4 hydraulic outriggers with ground pressure sensors
- Extending width drive track
- Lower platform height with extended track

*For indoor and outdoor use  
Fit through doorways  
Set up around obstacles  
Negotiates uneven sites*

*Rubber Tracks  
Rotating Basket  
Expanding track width for extra stability  
Set up footprint < 3m  
200kg SWL over full working range  
Electrical socket in basket  
**DUAL Power***

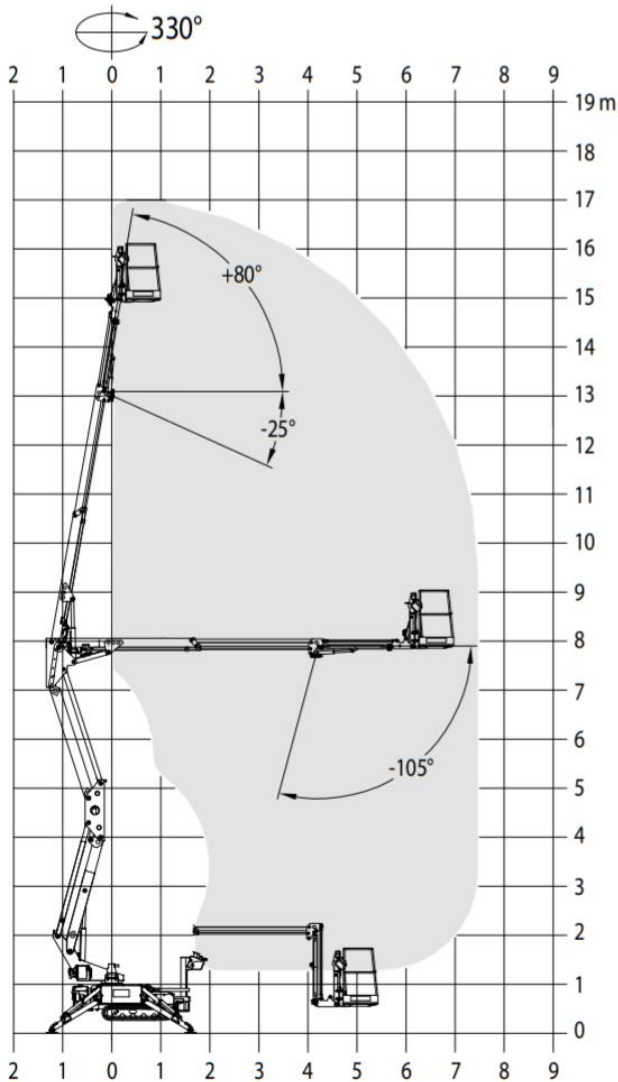


**Remember, we can supply Operators**

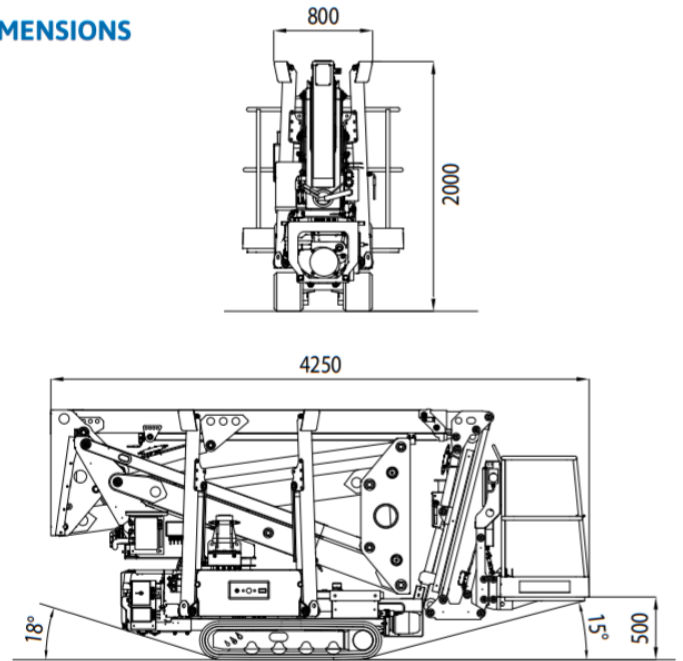
*Meaning you get maximum use from the machine without the risk of operating it yourself,  
and you don't need to keep your team EWP Qualified  
(they should still have working at heights and harness tickets)*

## Traccess 170 - 17m Mobile Elevating Work Platform

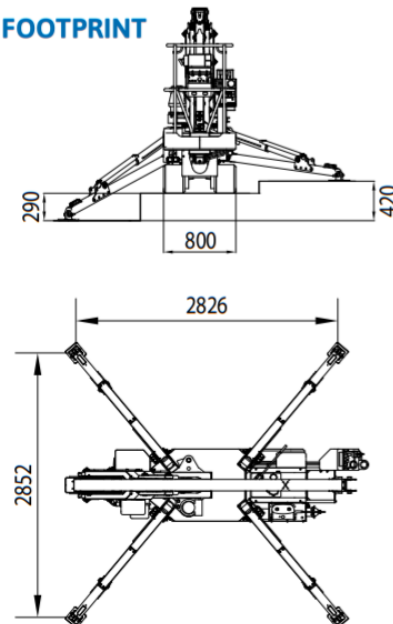
### WORKING ENVELOPE



### DIMENSIONS



### OUTRIGGER FOOTPRINT



\* outreach and height max values and repeatability can change within  $\pm 3\%$  due to manufacturing variation and working condition.