

Traccess 135 - 13.5m Mobile Elevating Work Platform



Max Work Height	13m (11m to basket floor)
Max Work Radius	6.5m
Max SWL	200kg (over full range)
2person Platform	1300x700x1100mm
Travel Dimensions	3760mm long 780mm wide 2000mm high
Total Weight	1600kg
Turret Rotation	320°
Leg Max Ground Reaction Force	1500daN
Max Allowed Windspeed	12.5m/sec
Max Allowed Manual Lateral Force	20daN
Gradeability	~31%
Max Allowed Ground Incline	3°

- Articulated boom (one element) + telescopic boom (main boom + extension) + jib
- 320° turret rotation on bearing turntable
- Individual hydraulic controls in basket
- Engine start and stop controls from basket
- Basket base in composite material with aluminium guardrails
- Automatic hydraulically actioned basket levelling
- Basket load sensing device
- 4 hydraulic outriggers with ground pressure sensors

*For indoor and outdoor use
Fit through doorways
Set up around obstacles
Negotiates uneven sites*



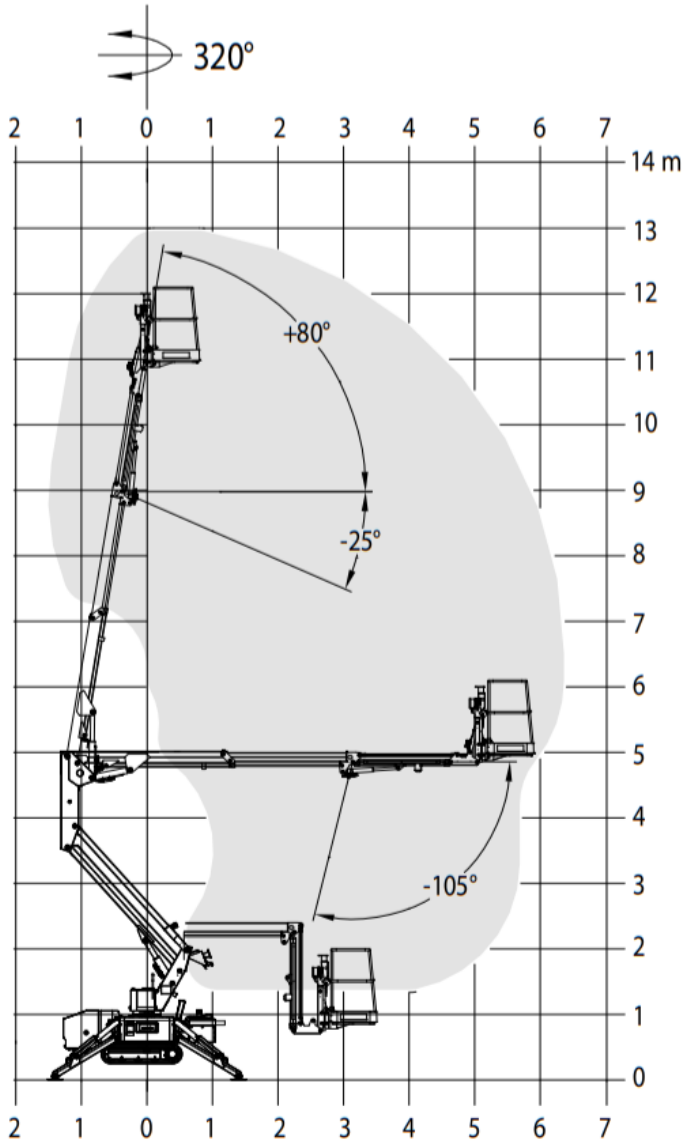
*Rubber Tracks
Set up footprint < 3m
200kg SWL over full working range
Electrical socket in basket
DUAL Power*

Remember, we can supply Operators

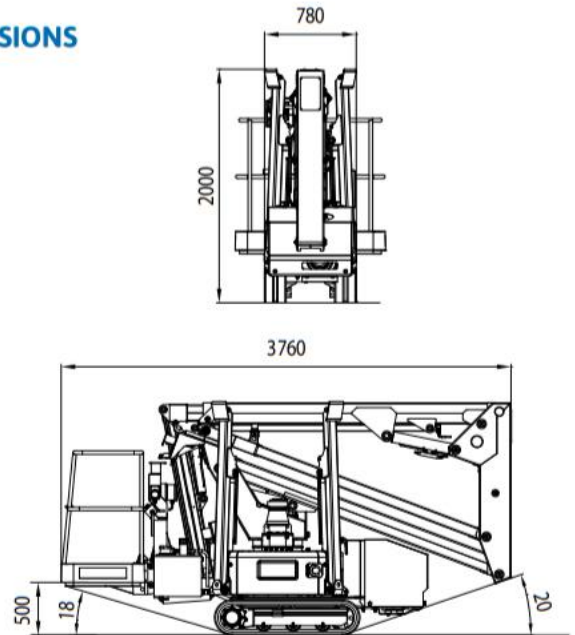
*Meaning you get maximum use from the machine without the risk of operating it yourself,
and you don't need to keep your team EWP Qualified
(they should still have working at heights and harness tickets)*

Traccess 135 - 13.5m Mobile Elevating Work Platform

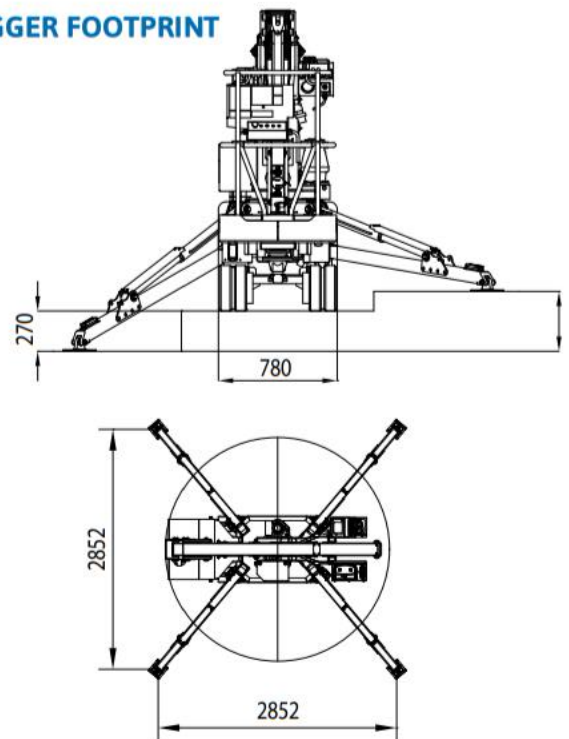
WORKING ENVELOPE



DIMENSIONS



OUTRIGGER FOOTPRINT



* outreach and height max values and repeatability can change within $\pm 3\%$ due to manufacturing variation and working condition.